

NON-RETURN VALVES

N8

VALVE SYMBOL



Gas or Liquid
Up to 700 Bar MWP
Opening Pressure 0.08 Bar
Ø6.4 mm Nominal Bore (DN8)
Cv: 0.7
Weight: 0.35 Kg (Stainless Steel)

The N8 Non-Return Valve features a valve pad to maintain valve seat integrity during high flow.

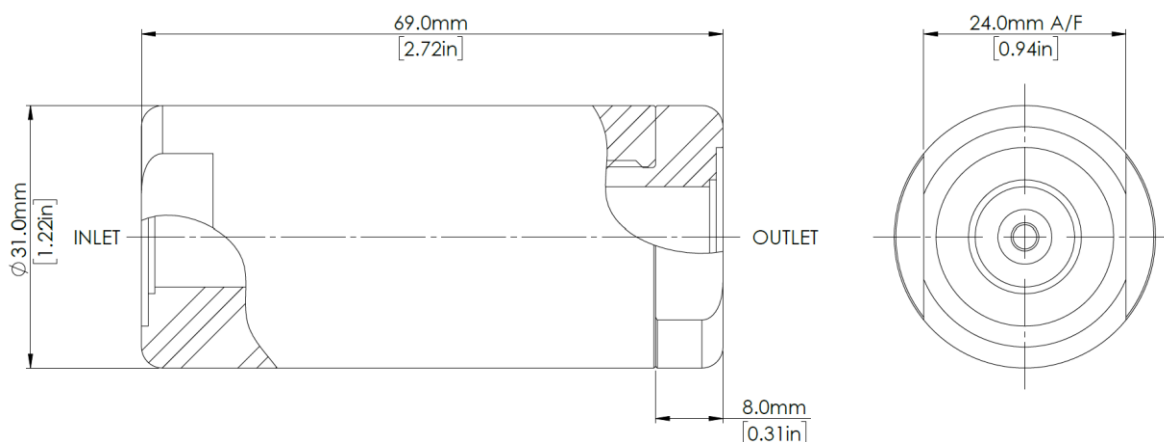
A closely guided valve reduces vibrations and oscillations at both high and low flows.

Precision machined and fine finishes where required ensure excellent leak tight integrity, making this valve ideal for Hydrogen applications.

MATERIALS

Body	See product selector
Spring	316 Stainless Steel
Seat Pad	See product selector
O-rings	See product selector
Valve	Brass

DIMENSIONS AND INSTALLATION DETAILS





Designed and Manufactured in the UK

MODEL CODE CONFIGURATOR

COMPLETE VALVES

Product Type -	Porting Size -	Porting Type -	Material -	Seal and Seat Pad Material
N8 -	1 (1/4")	FB (BSPP Female)	1 (Aluminium)	1 (EPDM) -50°C to +140°C
	2 (3/8")	FN (NPT Female)	2 (Brass)	2 (FKM) -20°C to +140°C
		VCR (Male)	3 (Stainless Steel)	3 (NBR) -30°C to +100°C
				4 (HNBR) -35°C to +140°C

Example part number: N8 – 1 – FB – 3 – 3

Other options available on request. Please contact Flow Products

Maximum working pressure

Stainless Steel: Limited to 700 Bar MWP.

Brass: Limited to 450 Bar MWP.

Aluminium: Limited to 450 Bar MWP.

BSPP Ports: Limited to 450 Bar MWP.

NPT Ports: Limited to 700 Bar MWP

SERVICE KITS

Product Type -	Seal and Seat Pad Material
N8 -	1 (EPDM)
	2 (FKM)
	3 (NBR)
	4 (HNBR)

Example part number: N8 – 3