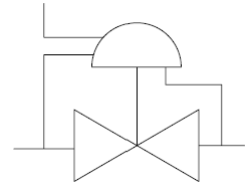


PRESSURE REDUCING VALVES

PRD25

VALVE SYMBOL



Gas or Liquid

350 Bar Maximum
Inlet Pressure

1.5 - 250 Bar Outlet
Pressure Range

-50°C to +140°C

Semi Balanced

DN 25

Ø25.0mm Nominal
Bore

Cv: 7.0

Internal and External
Dome Loading

Weight: 31.0 Kg
(Stainless Steel)

The PRD25 dome loaded pressure reducing valve is both compact and robust in construction making it the ideal solution for a wide range of applications.

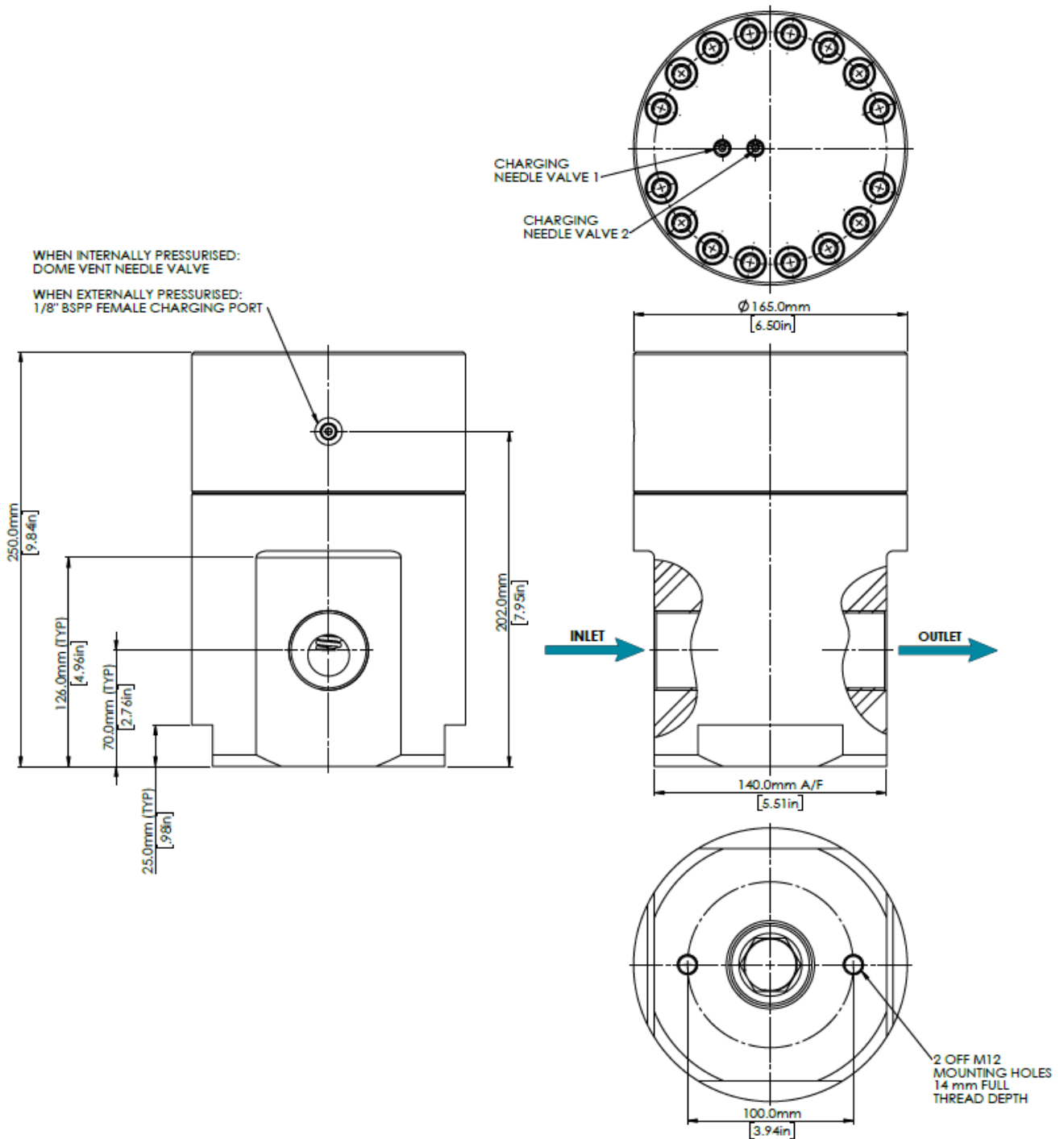
The finely tuned valve design strikes an excellent balance between high sealing force, compact design, a wide outlet pressure range and precisely controlled outlet pressure.

The valve has been designed to be used with a wide range of gasses and liquids. Component parts are precision machined and include fine finishes where required to ensure excellent leak tight integrity even with the most searching of mediums.

MATERIALS

Body	See product selector
Stem (main valve)	1.4404 (316L Stainless Steel)
Seat	See product selector
Back-up rings	PTFE
Valve Spring (Wetted)	316 Stainless Steel
O-rings	See product selector
Trim	A4 Stainless Steel

DIMENSIONS AND INSTALLATION DETAIL





Designed and Manufactured in the UK

MODEL CODE CONFIGURATOR COMPLETE VALVES

Product Type -	Porting Size -	Porting Type -	Material -	Seal Material -	Seat Material -	Gauge Port
PRD25 -	1 (1")	FB (BSPP Female)	1 (Aluminium)	1 (EPDM) -50°C to +140°C	1 (Nylon)	1 (No gauge Port)
	2 (1-1/4")	FN (NPT Female)	2 (Brass)	2 (FKM) -20°C to +140°C	2 (Peek)	2 (1/4" BSPP Gauge Ports)
	3 (1-1/2")		3 (Stainless Steel)	3 (NBR) -30°C to +100°C	3 (Stainless Steel)	
	4 (2")		4 (Aluminium Bronze)	4 (HNBR) -35°C to +140°C		

Example part number: PRD25 – 3 – FB – 3 – 3 – 2 – 1

Other options available on request. Please contact Flow Products

Maximum working pressure

Stainless Steel: Limited to 350 Bar MWP.

Brass: Limited to 315 Bar MWP.

Aluminium: Limited to 315 Bar MWP.

Aluminium Bronze: Limited to 350 Bar MWP.

SERVICE KITS

Product Type -	Seal Material -	Seat Material
PRD15 -	1 (EPDM)	1 (Nylon)
	2 (FKM)	2 (Peek)
	3 (NBR)	3 (Stainless Steel)
	4 (HNBR)	

Example part number: PRD25 – 3 – 2